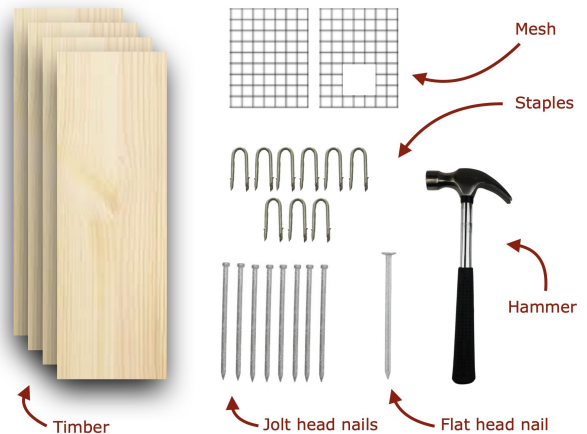


HOW TO BUILD A TRAPPING TUNNEL

Materials and equipment

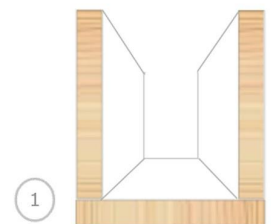
- 4 x fencing timber (150mm x 25mm x 500mm)
- 10 x 60mm jolt head nails
- 1 x 75mm flat head nail
- 9 x staples (19 x 2mm)
- 1 x front mesh screen (size: 19mm²) w/ opening
- 1 x back mesh screen (size: 19mm²)



STEP 1 – fasten base to the sides

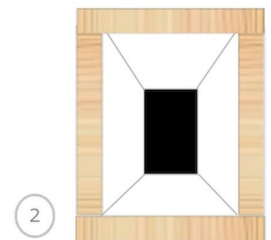
Hammer in a 60mm jolt head nail in each corner of the base piece through to the walls. This is a bit fiddly to hold the pieces in the correct position, so you may need some help for this.

TIP: to help fasten the first three sides, we recommend using a block of 4 pieces of timber screwed together



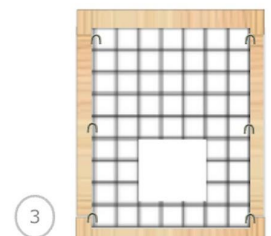
STEP 2 – nail the lid on

Line up the sides to the lid and nail in each corner. Use a nail in the centre of the sides of either the top or bottom piece for added strength.



STEP 3 – staple on the front mesh

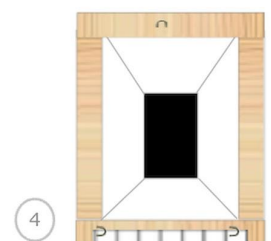
Using a staple in each corner, fasten the front back mesh to the tunnel. Ensure the entrance hole is level with the top of the base. Fold or file back the sharp edges on the mesh hole entrance.



STEP 4 – staple on the back mesh

Hammer a staple vertically on each corner of the bottom wire – the mesh should have room to hinge open like a door.

Hammer the final staple in the centre of the top piece of wood just above the top wire of the mesh. The flat head nail should be able to be inserted through the staple without being too loose. The nail holds the door closed and the tunnel is now ready for you to insert the trap.



STEP 5 – quality check

Check that:

- Mesh around the tunnel entrance is trimmed and flush
- Entrance hole is level with the base piece
- Flat head nail can be easily slid in and out of the top curved staple, and back mesh can open easily
- Wooden sides are attached securely without nails sticking out

STEP 6 – get trapping

See our 'How to get trappin' guide for tips on how to slide in your Victor Trap, where to place your tunnel and what bait to use. Happy trapping!

