

# HOW TO USE A CHEWCARD

Chew cards are a great way to work out the best location for your backyard trap. This is especially helpful when you first start out trapping or if your trap hasn't caught anything for a while.

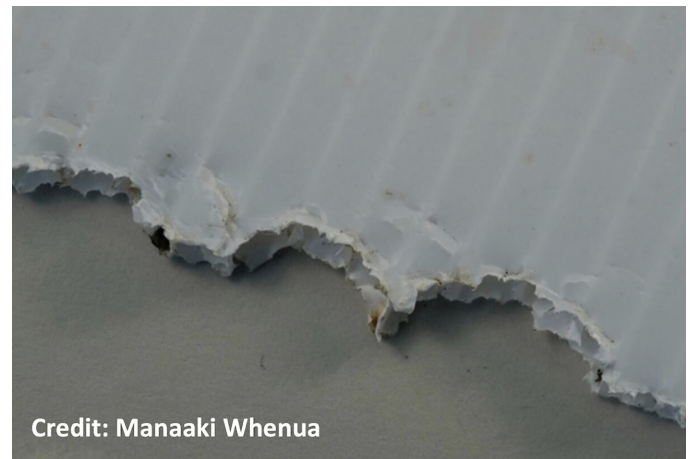
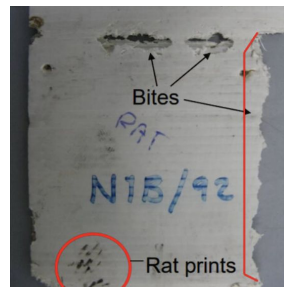
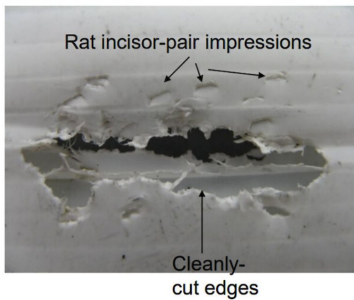
## Installing chew cards

Start by placing the cards in areas where you suspect rat activity, eg. near compost or rubbish bins. Nailing it to a nearby tree or fence (at a height of 50mm-100mm) will help keep it secure. We suggest leaving it out for around 5-7 nights.

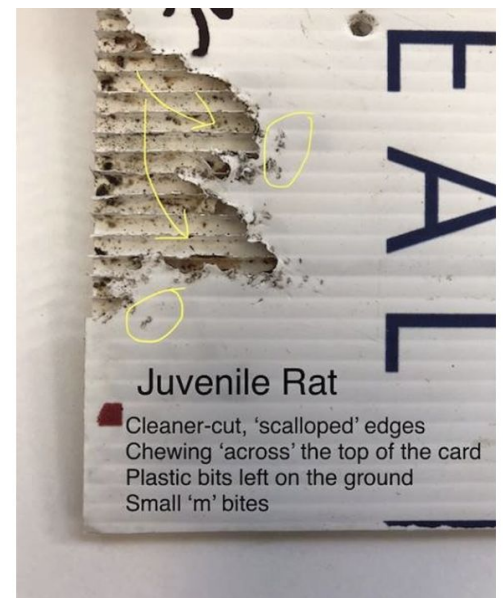
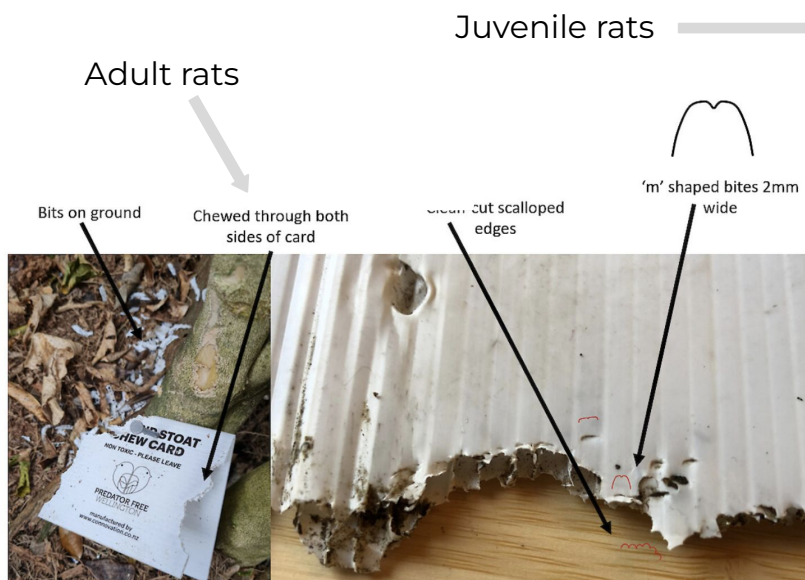


## Identifying bite marks

**Rats:** typically remove large parts or all of the baited portions of the card.

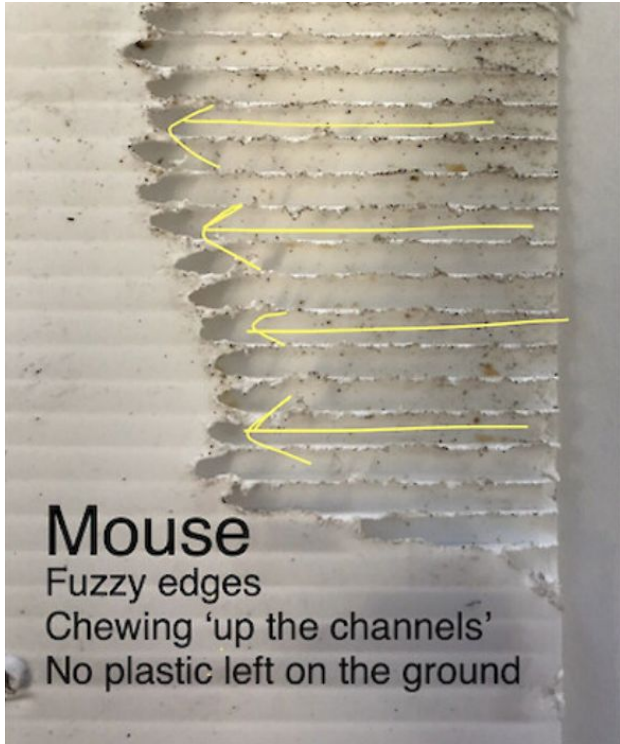


**Extra for experts:** How to differentiate between an adult and a juvenile rat chew



# HOW TO USE A CHEWCARD

**Mice:** mouse chews are usually between the channels on one surface of the card



**Other predators:**  
cat, hedgehog and stoat

